

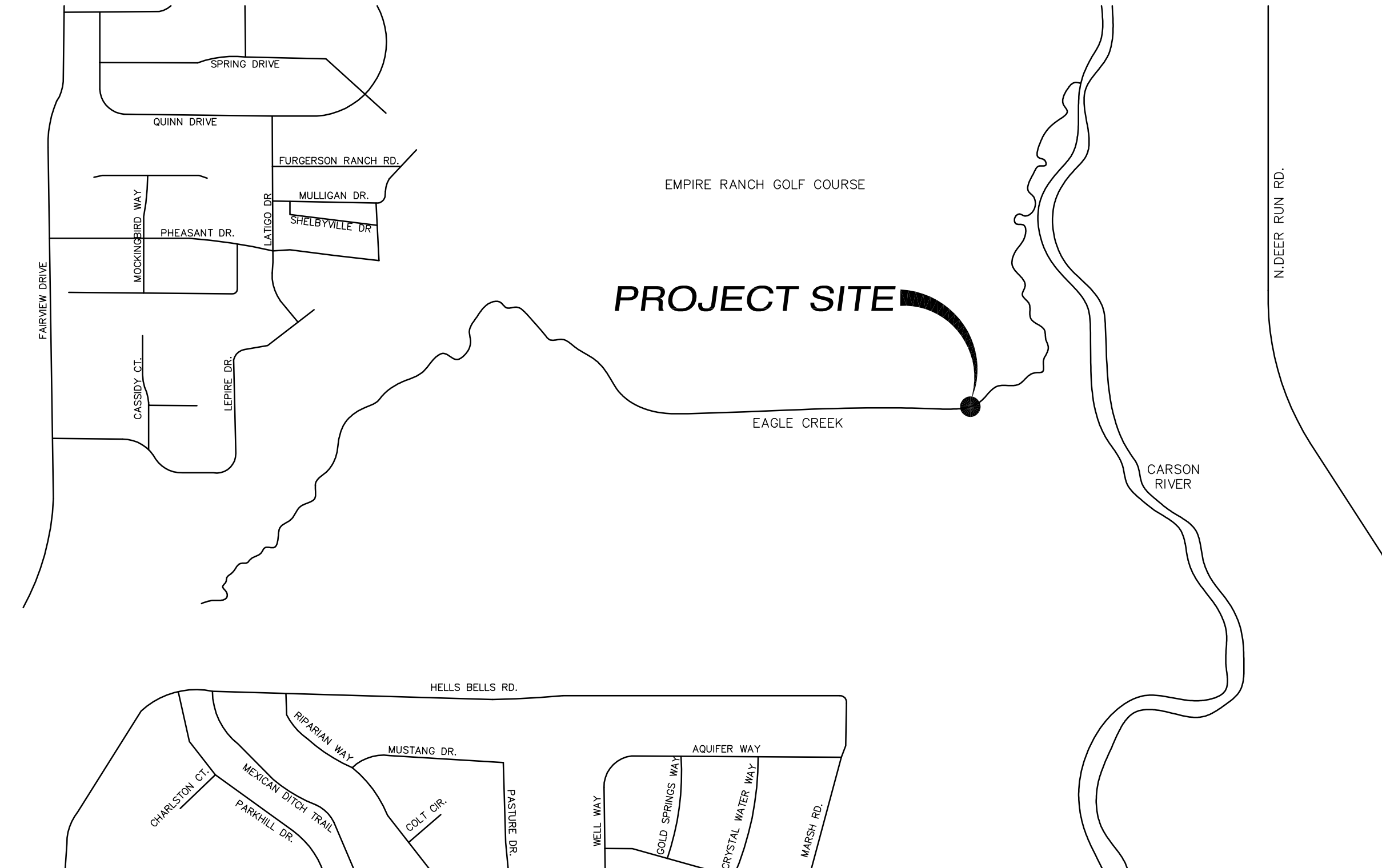
# CARSON CITY PARKS & RECREATION DEPARTMENT EAGLE CREEK BRIDGE

PUBLIC WORKS DEPARTMENT PROJECT NO. 011404

APN: 010-581-17

JULY 2015

2 working days  
Call before you Dig.  
1-800-227-2600  
AVOID CUTTING UNDERGROUND UTILITIES



**LOCATION MAP**  
N. T.S.

**OWNER/DEVELOPER:**

**CARSON CITY PARKS & RECREATION DEPARTMENT**  
3303 BUTTI WAY, BLDG #9  
CARSON CITY, NV 89701  
(775) 887-2262 FAX (775) 887-2145

**ENGINEER**



800 E. COLLEGE PARKWAY  
CARSON CITY, NEVADA 89706  
PH.: (775) 883-7077  
FAX: (775) 883-7114

**GENERAL NOTES:**

- ALL WORK SHALL CONFORM TO THE STANDARD SPECIFICATIONS AND DETAILS FOR PUBLIC WORKS CONSTRUCTION (ORANGE BOOK), LATEST EDITION, AS ADOPTED BY CARSON CITY.
- THE LOCATION OF EXISTING UTILITIES SHOWN ON THESE DRAWINGS IS BASED ON THE BEST INFORMATION AVAILABLE TO THE ENGINEER. IT SHALL BE THE CONTRACTOR'S RESPONSIBILITY TO VERIFY THESE LOCATIONS AT THE PROPOSED POINTS OF CONNECTIONS AND IN AREAS OF POSSIBLE CONFLICT WITH NEW UTILITY INSTALLATION. PRIOR TO BEGINNING CONSTRUCTION, SHOULD THE CONTRACTOR FIND ANY DISCREPANCIES BETWEEN THE CONDITIONS EXISTING IN THE FIELD AND THE INFORMATION SHOWN ON THESE DRAWINGS, HE SHALL NOTIFY THE ENGINEER BEFORE PROCEEDING WITH CONSTRUCTION.
- IN ACCORDANCE WITH GENERALLY ACCEPTED CONSTRUCTION PRACTICES THE CONTRACTOR WILL BE SOLELY AND COMPLETELY RESPONSIBLE FOR THE CONDITIONS OF THE JOB SITE, INCLUDING SAFETY OF ALL PERSONS AND PROPERTY DURING PERFORMANCE OF THE WORK. THIS REQUIREMENT WILL APPLY CONTINUOUSLY AND NOT BE LIMITED TO NORMAL WORKING HOURS. THE CONTRACTOR SHALL BE RESPONSIBLE FOR THE DESIGN AND CONSTRUCTION OF PROPER SHORING OF TRENCHES IN ACCORDANCE WITH OCCUPATIONAL SAFETY LAWS. THE DUTIES OF THE PROJECT CIVIL ENGINEER DO NOT INCLUDE REVIEW OF THE ADEQUACY OF THE CONTRACTOR'S SAFETY IN, ON OR NEAR THE CONSTRUCTION SITE.
- SHOULD IT APPEAR THAT THE WORK TO BE DONE, OR ANY MATTER RELATIVE THERETO, IS NOT SUFFICIENTLY DETAILED OR EXPLAINED ON THESE PLANS, THE CONTRACTOR SHALL CONTACT THE PROJECT ENGINEER FOR SUCH FURTHER EXPLANATIONS AS MAY BE NECESSARY.
- THE CONTRACTOR SHALL CALL UNDERGROUND SERVICE ALERT "CALL BEFORE YOU DIG" (1-800-227-2600) TWO (2) WORKING DAYS PRIOR TO THE START OF CONSTRUCTION
- ALL CLEARING, GRADING OR FILLING OF LAND IS SUBJECT TO CHAPTER 33 AND APPENDIX J, OF THE 2012 INTERNATIONAL BUILDING CODE AS ADOPTED BY CARSON CITY. ANY CLEARING, GRADING OR FILLING OF LAND OF ONE ACRE OR MORE WILL ALSO REQUIRE A PERMIT FROM THE NEVADA DEPARTMENT OF ENVIRONMENTAL PROTECTION FOR AIR QUALITY AND STORM DISCHARGE PURPOSES.
- ALL TRAFFIC CONTROL AND BARRICADING WITHIN THE CARSON CITY RIGHT-OF-WAY SHALL CONFORM TO PART VI OF THE MANUAL ON UNIFORM TRAFFIC CONTROL DEVICES (MUTCD), LATEST EDITION, AND THE NEVADA TEMPORARY TRAFFIC CONTROL GUIDELINES, LATEST EDITION. NO STREET CLOSURES WILL BE ALLOWED WITHOUT APPROVAL OF A TRAFFIC CONTROL PLAN BY THE CARSON CITY ENGINEER.

- A CONTINENTAL PREFABRICATED BRIDGE HAS BEEN PURCHASED BY CARSON CITY FROM CONTECH CONSTRUCTION PRODUCTS, INC., ADDRESS: 8301 STATE HIGHWAY 29 NORTH, ALEXANDRIA, MN 56308; CONTACT: GARY WESTPHAL, (320) 852-5356. BRIDGE WILL BE DELIVERED TO THE SITE BY THE MANUFACTURER. CONTRACTOR TO CONTACT CONTECH TO COORDINATE DELIVERY.
- CARSON CITY DOES NOT HAVE CONTROL OVER WATER LEVELS IN EAGLE CREEK. CONTRACTOR SHOULD ASSUME THAT SOME WATER MAY BE PRESENT DURING CONSTRUCTION. ANY DEWATERING NECESSARY TO CONSTRUCT THE ABUTMENTS IS THE RESPONSIBILITY OF THE CONTRACTOR AND MUST BE FACTORED INTO HIS BID AS APPROPRIATE. IF DEWATERING IS NECESSARY, CONTRACTOR SHALL SUBMIT A DEWATERING PLAN TO CARSON CITY.
- THE CONTRACTOR SHALL VERIFY ALL DIMENSIONS AND CONDITIONS PRIOR TO CONSTRUCTION.
- DIMENSIONS SHALL TAKE PRECEDENCE OVER SCALES ON DRAWINGS.

**ABBREVIATIONS**

AC	ASPHALT CONCRETE	GALV	GALVANIZED	Q 100	100 YEAR PEAK FLOW
ACP	ASBESTOS CEMENT PIPE	GB	GRADE BREAK	R	RADIUS
AGG	AGGREGATE	GDW	GRAVEL DRIVEWAY	RCP	REINFORCED CONCRETE PIPE
BC	BEGIN CURVE (HORIZONTAL)	CD	GROUND	REF	REFERENCE
BOW	BACK OF WALK	GV	GATE VALVE	RET	CURB RETURN
BF, BOF	BOTTOM OF FOOTING	H	HANDICAPPED	RP	RADIUS POINT
BV	BUTTERFLY VALVE	HGL	HYDRAULIC GRADE LINE	RT	RIGHT
BVC	BEGIN VERTICAL CURVE	IE	INVERT ELEVATION	R/W, ROW	RIGHT-OF-WAY
BW	BOTH WAYS	HP	HIGH POINT	S=	SLOPE
CB	CATCH BASIN	ID	INSIDE DIAMETER	S	SOUTH
CB	CATCH BASIN	IS	INVERT ELEVATION	SD	STORM DRAIN
cfs	CUBIC FEET PER SECOND	INT	INTERSECTION	SDMH	STORM DRAIN MANHOLE
C&G	CURB AND GUTTER	IRR	IRRIGATION	SL	STREET LIGHT
€	CENTER LINE	LAT	LATERAL	SS	SANITARY SEWER
CL	CLASS	LF	LINEAR FEET	SSCO	SANITARY SEWER CLEAN OUT
CMP	CORRUGATED METAL PIPE	LP	LOW POINT	SSMH	SANITARY SEWER MANHOLE
COMP	COMPACTION	LT	LEFT	SSPWC	STANDARD SPEC. FOR PUBLIC WORKS CONSTRUCTION
CONC	CONCRETE	MAX	MAXIMUM	STA	STATION
CONTR	CONTRACTOR	MDD	MAXIMUM DRY DENSITY	SW	SIDEWALK
CP	CONCRETE PAD	MH	MANHOLE	TELE	TELEPHONE
CTV	CABLE TELEVISION	MIN	MINIMUM	TBO	TEMPORARY BLOW OFF VALVE
DI	DROP INLET	MJ	MECHANICAL JOINT	TC	TOP OF CURB
DIA	DIAMETER	MMD	MAXIMUM MARSHALL DENSITY	TG	TO GRADE
DWY	DRIVEWAY	MUTCD	MANUAL FOR TRAFFIC CONTROL DEVICES	TOB	TOP OF BERM
E	EAST	N	NORTH	TF, TOF	TOP OF FOOTING
EA	EACH	NAP	NOT A PART	TW, TOW	TOP OF WALL
EC	END CURVE (HORIZONTAL)	NIP	NOT IN PROJECT	TS	TRAFFIC SIGNAL
ELL	ELBOW	NTS	NOT TO SCALE	TSCB	TRAFFIC CONTROL SIGNAL BOX
ELEC	ELECTRICAL	OC	ON CENTER	TR	TOP OF RAIL
ELEV	ELEVATION	OD	OUTSIDE DIAMETER	TRANS	TRANSITION
EVC	END VERTICAL CURVE	OH	OVERHEAD	MAX	MAXIMAL
EX	EXISTING	UG/FP	UNDER GROUND POWER	UNO	UNLESS NOTED OTHERWISE
EXT	EXTERIOR	UNO	UNLESS NOTED OTHERWISE	Vs	VELOCITY AT 5 YEAR PEAK
EXCA	EXCAVATION	PG	PAD GRADE	VC	VERTICAL CURVE
FE	FINISH ELEVATION	PI	POINT OF INTERSECTION	VEL	VELOCITY
FES	FINISH GRADE	PL	PROPERTY LINE	VERT	VERTICAL
FF	FINISH FLOOR	POCC	POINT OF COMPOUND CURVATURE	VG	VALLEY GUTTER
FFC	FRONT FACE OF CURB	POT	POINT OF TANGENCY	W	WEST
FG	FINISH GRADE	PP	POWER POLE	W/G	WATER AND GAS
FH	FIRE HYDRANT	PRC	POINT OF REVERSE CURVE	WL	WATER LINE
FL	FLOW LINE	PRVC	POINT OF REVERSE CURVE VERTICAL CURVE	WM	WATER METER
FLG	FLANGE	PVC	POLYVINYL CHLORIDE	WS	WATER SURFACE
fbs	FEET PER SECOND	PVT	PAVEMENT	WV	WATER VALVE
FTO	FOOTING	Q 5	5 YEAR PEAK FLOW	WWF	WELDED WIRE FABRIC
G	GAS				

EXISTING	LEGEND	PROPOSED
---4174---	CONTOUR LINE	---4174---
+ 4163.1	GROUND ELEVATION	+ 4163.1
(Tree symbol)	TREE	(Tree symbol)
(Rock symbol)	ROCK	(Rock symbol)
(Edge of pavement symbol)	EDGE OF PAVEMENT	(Edge of pavement symbol)
(AC paving symbol)	AC PAVING	(AC paving symbol)
(To be removed symbol)	TO BE REMOVED	(To be removed symbol)
(Curb & gutter symbol)	CURB & GUTTER	(Curb & gutter symbol)
(Concrete symbol)	CONCRETE	(Concrete symbol)
(Utility pole symbol)	UTILITY POLE	(Utility pole symbol)
(Light symbol)	LIGHT	(Light symbol)
(Guy wire symbol)	GUY WIRE	(Guy wire symbol)
(ET symbol)	ELECTRIC TRANSFORMER	(ET symbol)
(EV symbol)	ELECTRIC VAULT	(EV symbol)
(EP symbol)	ELECTRIC PANEL	(EP symbol)
(EC symbol)	ELECTRIC CABINET	(EC symbol)
(EB symbol)	ELECTRIC BOX	(EB symbol)
(EM symbol)	ELECTRIC METER	(EM symbol)
(EG symbol)	ELECTRIC GENERATOR	(EG symbol)
(E symbol)	ELECTRIC MANHOLE	(E symbol)
(AC symbol)	AIR CONDITIONER	(AC symbol)
(E symbol)	ELECTRIC OUTLET	(E symbol)
(Bollard symbol)	BOLLARD	(Bollard symbol)
(Storm drain manhole symbol)	STORM DRAIN MANHOLE	(Storm drain manhole symbol)
(Proposed catch basin symbol)	PROPOSED CATCH BASIN	(Proposed catch basin symbol)
(Water valve symbol)	WATER VALVE	(Water valve symbol)
(Irrigation control valve symbol)	IRRIGATION CONTROL VALVE	(Irrigation control valve symbol)
(Water meter symbol)	WATER METER	(Water meter symbol)
(Water spicket / hose bib symbol)	WATER SPICKET / HOSE BIB	(Water spicket / hose bib symbol)
(Water manhole symbol)	WATER MANHOLE	(Water manhole symbol)
(Water vault symbol)	WATER VAULT	(Water vault symbol)
(Gas valve symbol)	GAS VALVE	(Gas valve symbol)
(Gas meter symbol)	GAS METER	(Gas meter symbol)
(Fire hydrant symbol)	FIRE HYDRANT	(Fire hydrant symbol)
(Telephone manhole symbol)	TELEPHONE MANHOLE	(Telephone manhole symbol)
(Telephone box symbol)	TELEPHONE BOX	(Telephone box symbol)
(Telephone vault symbol)	TELEPHONE VAULT	(Telephone vault symbol)
(Sewer manhole symbol)	SEWER MANHOLE	(Sewer manhole symbol)
(Sewer cleanout symbol)	SEWER CLEANOUT	(Sewer cleanout symbol)
(Survey monument symbol)	SURVEY MONUMENT	(Survey monument symbol)
(Control point symbol)	CONTROL POINT	(Control point symbol)
(Barricade symbol)	BARRICADE	(Barricade symbol)
(Sign symbol)	SIGN	(Sign symbol)
(Retaining wall symbol)	RETAINING WALL	(Retaining wall symbol)
(Fence symbol)	FENCE	(Fence symbol)
(Fiber rolls symbol)	FIBER ROLLS	(Fiber rolls symbol)
(Flow line symbol)	FLOW LINE	(Flow line symbol)
(Soil test pit symbol)	SOIL TEST PIT	(Soil test pit symbol)
(Detail callout symbol)	DETAIL CALLOUT	(Detail callout symbol)

**SHEET INDEX:**

TITLE SHEET	C1.0
PLAN AND PROFILE	C2.0

**BASIS OF BEARINGS**

THE BASIS OF BEARING FOR THIS SURVEY IS BASED ON THE NEVADA COORDINATE SYSTEM OF 1983, WEST ZONE, NAD 83/94, CARSON CITY DATUM. DISTANCES SHOWN ARE GROUND DISTANCES USING A PROJECT COMBINED GRID TO GROUND SCALE FACTOR OF 1.000200.

**BASIS OF ELEVATIONS**

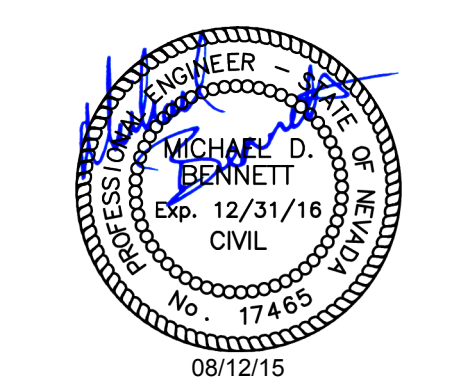
DATUM: NAVD 88  
PROJECT BENCHMARK = CARSON CITY CONTROL MONUMENT NO. CC003 HAVING AN ELEVATION OF 4606.30'



800 E. COLLEGE PARKWAY  
CARSON CITY, NEVADA 89706  
TEL (775) 883-7077  
FAX (775) 883-7114

WWW.LUMOSENGINEERING.COM

CIVIL ENGINEERING  
GEOTECHNICAL ENGINEERING  
PLANNING  
LANDSCAPE ARCHITECTURE  
SURVEYING / GIS  
CONSTRUCTION SERVICES  
MATERIALS TESTING



CARSON CITY PARKS AND RECREATION

EAGLE CREEK BRIDGE

TITLE SHEET

CARSON CITY

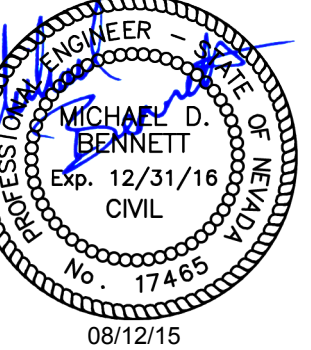
REV	DATE	DESCRIPTION
1	8-4-15	CHANGED TO C.C. TEMP. EROSION CONTROL DETAIL
2	8-12-15	PARCS AND REC COMMENTS

**C1.0**

DATE: JULY 2015  
DRAWN BY: KLN  
DESIGNED BY: MDB  
CHECKED BY: MDB  
JOB NO.: 8005.000

L:\AP\018005.000 - Eagle Creek Bridge.dwg (8/12/2015 11:15 am mdb) 08/12/2015 11:15 am mdb

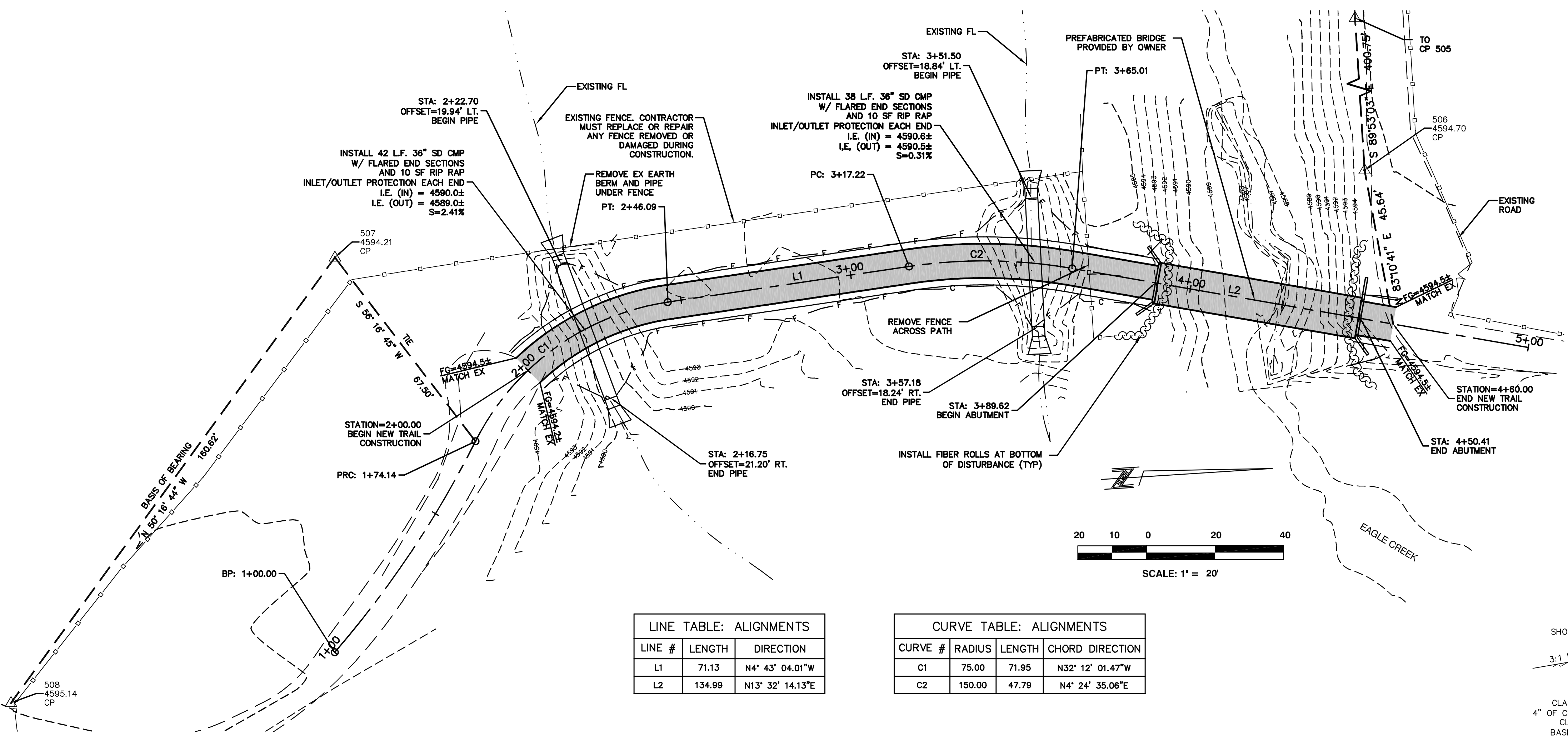




TEMPORARY CONTROL POINT DATA				
POINT NO.	NORTHING	EASTING	ELEVATION	MONUMENT TYPE
505	14736831.26	2305789.27	4596.98	CONTROL POINT
506	14736830.45	2306190.01	4594.70	CONTROL POINT
507	14736529.14	2306196.03	4594.21	CONTROL POINT
508	14736426.50	2306319.57	4595.14	CONTROL POINT

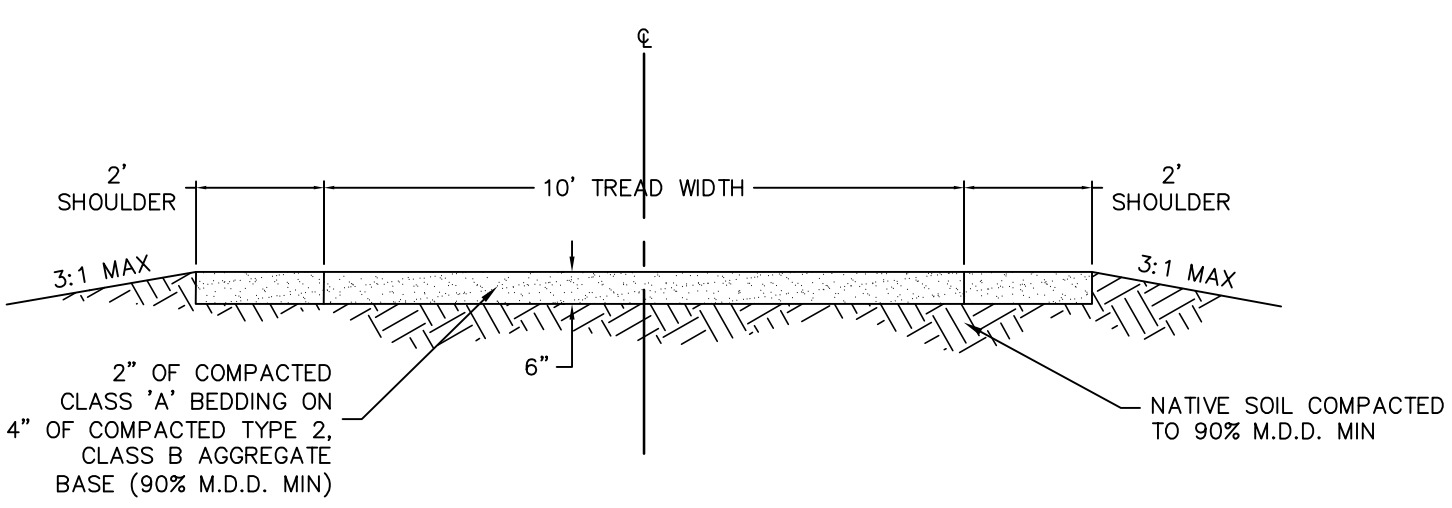
**GENERAL NOTES:**

- ALL CONSTRUCTION MATERIALS AND METHODS SHALL CONFORM TO THE REQUIREMENTS OF CARSON CITY DEVELOPMENT CODE, LATEST EDITION. IMPROVEMENT CONSTRUCTION SHALL COMPLY WITH THESE PLANS, CURRENT "ORANGE BOOK" STANDARD SPECIFICATIONS FOR PUBLIC WORKS CONSTRUCTION, AND THE CURRENT USDA FOREST SERVICE SPECIFICATIONS FOR CONSTRUCTION OF ROADS AND BRIDGES.
- CONTRACTOR SHALL NOTIFY, 48 HOURS PRIOR TO ANY EXCAVATION WORK, THE FOLLOWING UNDERGROUND UTILITY SERVICE: UNDERGROUND SERVICES ASSOCIATION (USA) 1-800-227-2600.
- THE CONTRACTOR SHALL BE RESPONSIBLE FOR THE PROTECTION OF ALL EXISTING SURVEY MONUMENTS AND OTHER SURVEY MARKERS DURING CONSTRUCTION.
- THE CONTRACTOR AGREES TO ASSUME SOLE RESPONSIBILITY FOR JOB SITE CONDITIONS DURING THE COURSE OF CONSTRUCTION OF THIS PROJECT, INCLUDING SAFETY OF ALL PERSONS AND PROPERTY, AND FURTHER AGREES THAT THIS REQUIREMENT SHALL APPLY CONTINUOUSLY AND NOT BE LIMITED TO NORMAL WORKING HOURS IN ACCORDANCE WITH THE PROVISIONS OUTLINED BY THE PROJECT CONTROL AND THE STANDARD SPECIFICATIONS.
- SHOULD IT APPEAR THAT THE WORK TO BE DONE, OR ANY MATTER RELATIVE THERETO, IS NOT SUFFICIENTLY DETAILED OR EXPLAINED ON THESE PLANS, THE CONTRACTOR SHALL CONTACT THE ENGINEER FOR SUCH FURTHER EXPLANATIONS AS MAY BE NECESSARY.
- AT ALL TIMES DURING CONSTRUCTION ADEQUATE TEMPORARY EROSION CONTROLS SHALL BE IN PLACE AS SHOWN ON THE PLANS.



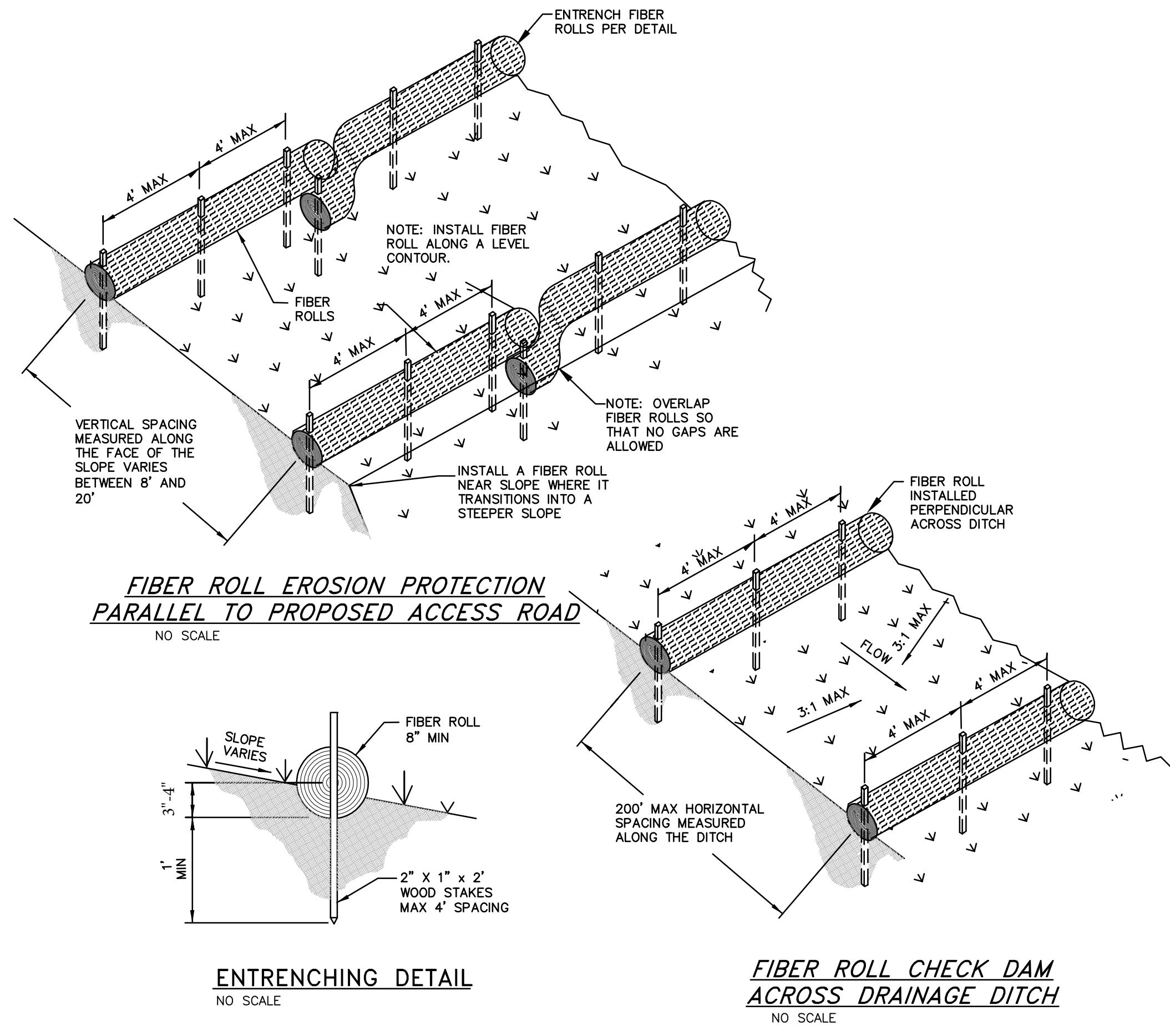
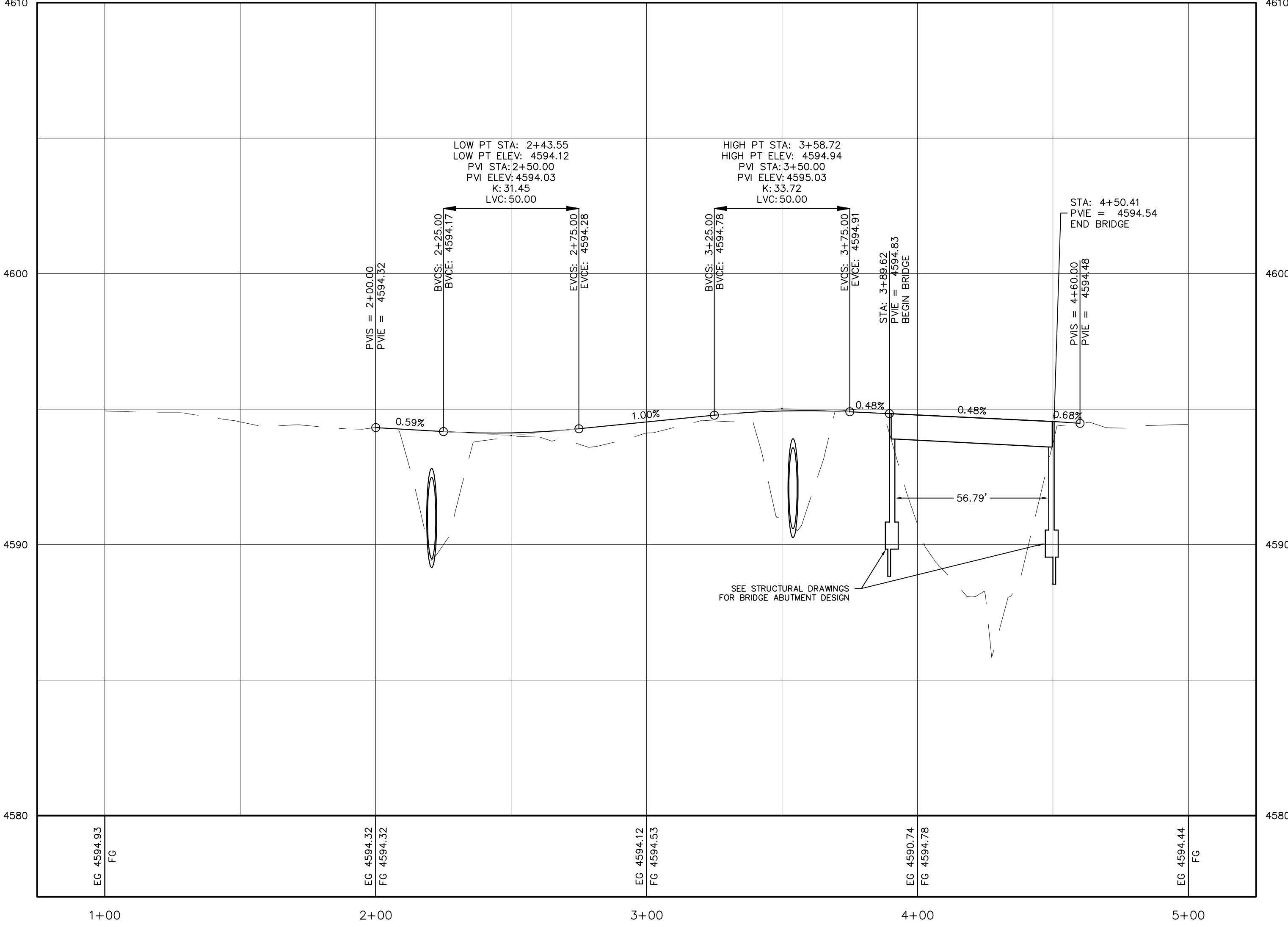
LINE TABLE: ALIGNMENTS		
LINE #	LENGTH	DIRECTION
L1	75.00	N4° 43' 04.01"W
L2	134.99	N13° 32' 14.13"E

CURVE TABLE: ALIGNMENTS			
CURVE #	RADIUS	LENGTH	CHORD DIRECTION
C1	75.00	71.95	N32° 12' 01.47"W
C2	150.00	47.79	N4° 24' 35.06"E



TRAIL TYPICAL SECTION  
 SCALE: N.T.S.

CL - STA: 0+75 TO STA: 5+25



TYPICAL FIBER ROLL INSTALLATION  
 SCALE: N.T.S.

CARSON CITY PARKS AND RECREATION  
**EAGLE CREEK BRIDGE**  
**PLAN AND PROFILE**

REV	DATE	DESCRIPTION
1	8-4-15	CHANGED TO CC TEMP EROSION CONTROL DETAIL
2	8-12-15	PARKS AND REC COMMENTS

**C2.0**  
 DATE: JULY 2015  
 DRAWN BY: KLN  
 DESIGNED BY: MDB  
 CHECKED BY: MDB  
 JOB NO.: 8005.000

L:\AP\08005.000 - Eagle Creek Bridge\Drawings\08005000 BASE.dwg,P&P, 08/12/2015 11:47 am mdbennett